



# AMPIGENE® PCR and qPCR

## PCR Solutions

PRODUCT NAME	PRODUCT #	SIZE	INFORMATION
AMPIGENE® Taq Mix	ENZ-PRT100	500 units	For standard PCR. Contains: AMPIGENE® Taq DNA Polymerase (5u/μl) 5x AMPIGENE® rxn buffer (with dNTPs)
AMPIGENE® HS Taq DNA Polymerase	ENZ-PRT101	500 units	Increased sensitivity PCR. Contains: AMPIGENE® HS Taq DNA Polymerase (5u/μl) 5x AMPIGENE® rxn buffer (with dNTPs)
AMPIGENE® Taq Mix	ENZ-NUC100	40, 200, 1000 rxn	For standard PCR. Contains: 2x AMPIGENE® Taq Mix
AMPIGENE® HS Taq Mix	ENZ-NUC101	40, 200, 1000 rxn	Increased sensitivity PCR. Contains: 2x AMPIGENE® HS Taq Mix
AMPIGENE® dNTP Mix	ENZ-NUC102	500μl (10mM)	Ultra-pure, stable, and suitable for a variety of PCR applications

## qPCR Solutions

PRODUCT NAME	PRODUCT #	SIZE	INFORMATION
AMPIGENE® qPCR Green Mix	Lo-ROX    ENZ-NUC103 Hi-ROX    ENZ-NUC104	200, 1000 rxn	Optimized dye-based qPCR. Contains: 2x AMPIGENE® qPCR Green Mix Lo-ROX or Hi-ROX
AMPIGENE® qPCR Probe Mix	Lo-ROX    ENZ-NUC105 Hi-ROX    ENZ-NUC106 No-ROX    ENZ-NUC107	200, 1000 rxn	Optimized probe-based qPCR. Contains: 2x AMPIGENE® qPCR Probe Mix Lo-ROX, Hi-ROX or No-ROX

## RT, RT-PCR, RT-qPCR Solutions

PRODUCT NAME	PRODUCT #	SIZE	INFORMATION
AMPIGENE® 1-Step RT-PCR Kit	ENZ-KIT105	50, 200, 1000 rxn	Optimized and efficient cDNA synthesis and PCR in a single tube. Contains: 2x 1-Step Mix, 20x RTase (w/RNase Inhibitor)
AMPIGENE® cDNA Synthesis Kit	ENZ-KIT106	50, 200 rxn	Efficient and sensitive cDNA synthesis for downstream qPCR. Contains: 5x cDNA Synthesis Mix, 20x RTase (w/RNase Inhibitor)
AMPIGENE® qPCR 1-Step Green Kit	Lo-ROX    ENZ-NUC108 Hi-ROX    ENZ-NUC109	200, 1000 rxn	Optimized and efficient cDNA synthesis and dye-based qPCR in a single tube. Contains: 2x AMPIGENE® qPCR 1-Step Green Mix Lo-ROX or Hi-ROX, 20x RTase (w/RNase Inhibitor)
AMPIGENE® qPCR 1-Step Probe Kit	Lo-ROX    ENZ-NUC110 Hi-ROX    ENZ-NUC111 No-ROX    ENZ-NUC112	200, 1000 rxn	Optimized and efficient cDNA synthesis and probe-based qPCR in a single tube. Contains: 2x AMPIGENE® qPCR 1-Step Probe Mix Lo-ROX, Hi-ROX or No-ROX, 20x RTase (w/RNase Inhibitor)

Amplify Your Research:  
[www.enzolifesciences.com](http://www.enzolifesciences.com)

### GLOBAL HEADQUARTERS

Enzo Life Sciences Inc.  
10 Executive Boulevard  
Farmingdale, NY 11735  
Phone: 800.942.0430  
Fax: 631.694.7501  
[info-usa@enzolifesciences.com](mailto:info-usa@enzolifesciences.com)

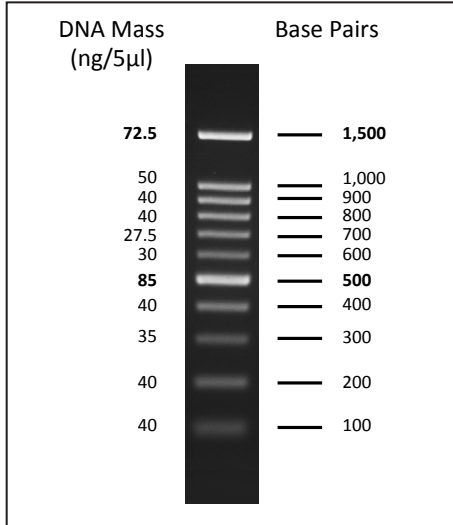
### EUROPE

Enzo Life Sciences (ELS) AG  
Industriestrasse 17  
CH-4415 Lausen, Switzerland  
Phone: +41 61 926 8989  
Fax: +41 61 926 8979  
[info-eu@enzolifesciences.com](mailto:info-eu@enzolifesciences.com)

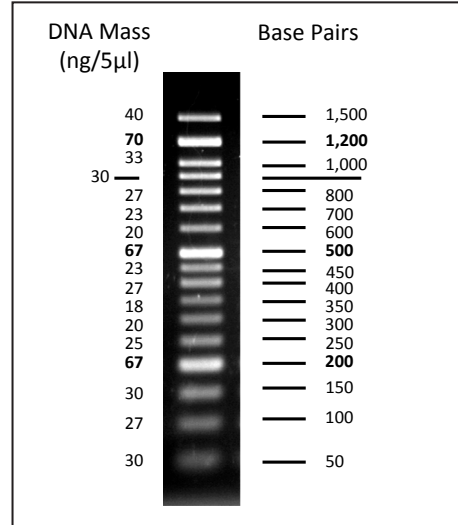
# AMPIGENE® DNA Ladders

AMPIGENE® DNA Ladders contain DNA fragments in a wide range that can be used as molecular weight standards for agarose gel electrophoresis. The bands are evenly spaced and have easily identifiable reference bands. The approximate mass of DNA in each of the bands is provided, assuming 5µl load, for determining the approximate mass of DNA in samples with comparable intensity and size.

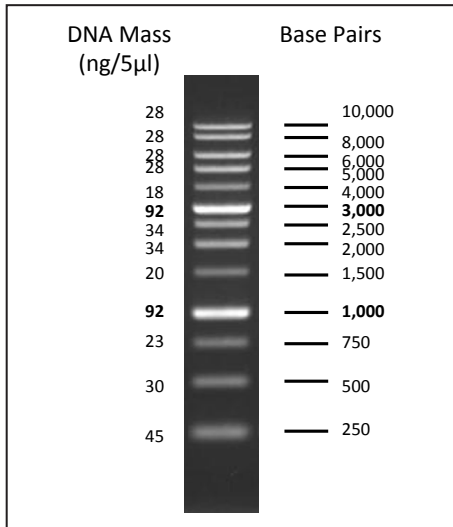
- Ready to use format can be loaded straight onto a gel
- Evenly spaced bands with intensified reference bands
- Room temperature stable



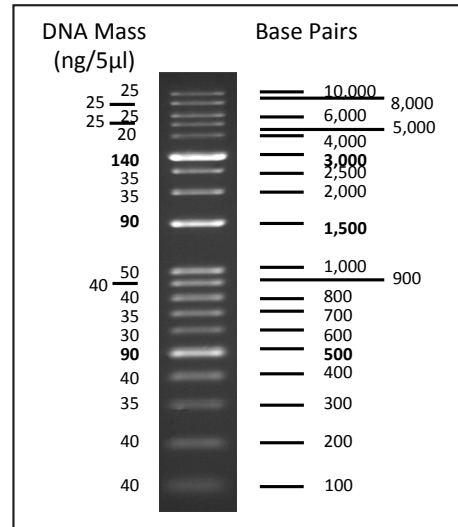
**ENZ-GEN101**  
100-1,500bp



**ENZ-GEN102**  
50-1,500bp



**ENZ-GEN103**  
250-10,000bp



**ENZ-GEN104**  
100-10,000bp

CONTACT INFORMATION

**GLOBAL HEADQUARTERS**

Enzo Life Sciences Inc.  
10 Executive Boulevard  
Farmingdale, NY 11735  
Phone: 800.942.0430  
Fax: 631.694.7501  
info-usa@enzolifesciences.com

**EUROPE**

Enzo Life Sciences (ELS) AG  
Industriestrasse 17  
CH-4415 Lausen, Switzerland  
Phone: +41 61 926 8989  
Fax: +41 61 926 8979  
info-eu@enzolifesciences.com