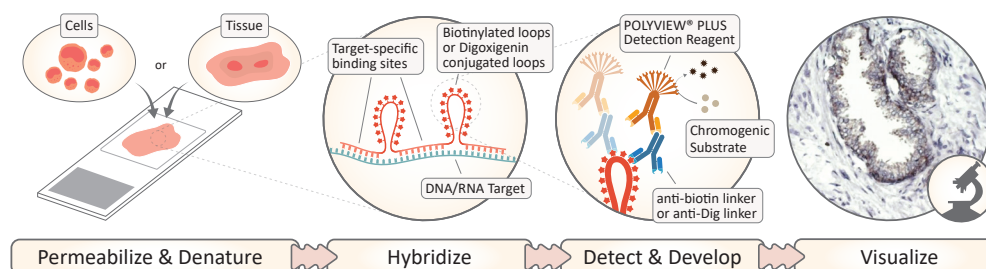


AMPIVIEW™ EGFR (AS) Dig RNA Probes

Powered by Enzo's LoopRNA ISH™ Technology

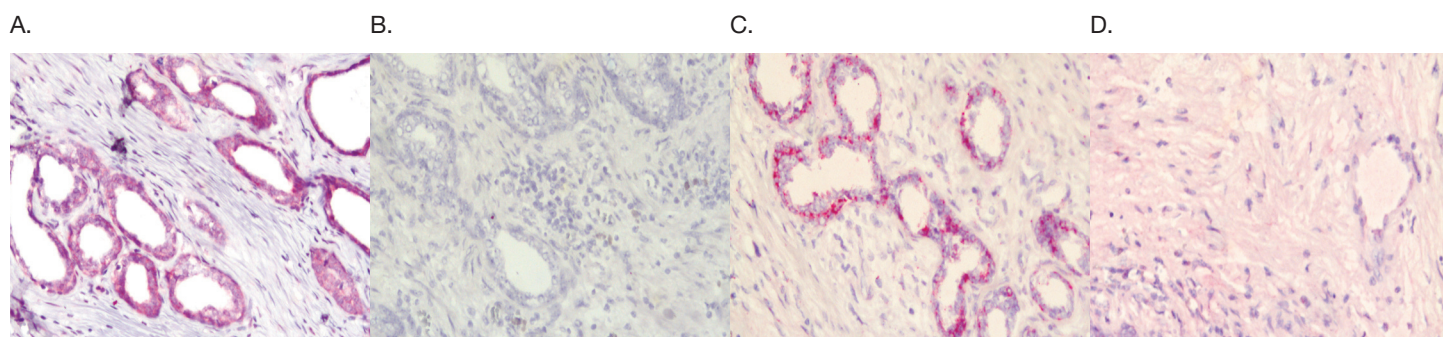
AMPIVIEW™ RNA probes are uniquely designed with the precision of targeted, sequence-specific RNA probes, powered by Enzo's LoopRNA ISH™ technology to deliver superior sensitivity when combined with Enzo's immunohistochemistry (IHC) detection solutions. When AMPIVIEW™ RNA probes hybridize to the target gene sequence, loops exposing specific labels (biotin or digoxigenin) are formed, making these probes highly specific and sensitive, while preserving the sample morphology.



AMPIVIEW™ EGFR (AS) Dig RNA probes are specifically designed to detect the RNA or DNA/RNA of the epidermal growth factor receptor (EGFR, ErbB-1 or HER1 in humans), a transmembrane protein receptor for members of the EGF family of extracellular protein ligands. Overexpression of this protein is associated with cancer.

AMPIVIEW™ EGFR (AS) Dig RNA probes are digoxigenin-labeled antisense probes that will hybridize to the fixed and pre-treated tissue section on the microscope slide. The probes can be detected with an unconjugated anti-digoxigenin linker, followed by a polymer-based detection solution such as Enzo's POLYVIEW® PLUS reagents combined with HIGHDEF® chromogens. Results can be visualized under a light microscope. For more detection product information visit enzolifesciences.com/AMPIVIEW.

Visualize the Spatial Biology of EGFR in FFPE Tissue Specimens with Stronger Signal and Minimal Background Compared to Leading Competitor



EGFR detection in benign prostatic hyperplasia, with acute inflammation specimen with A. AMPIVIEW™ EGFR (AS) Dig RNA probes, B. AMPIVIEW™ NSP-Dig RNA probes (negative control) amplified and detected with DIGX® rabbit anti-digoxigenin linker (ENZ-ABS303), POLYVIEW® PLUS AP (anti-rabbit) (ENZ-ACC110), combined with HIGHDEF® Red AP substrate/chromogen and hematoxylin (ENZ-ACC106); C. leading competitor's EGFR probes, D. leading competitor's negative control probes, amplified and detected per manufacturer's protocol. Note AMPIVIEW™ RNA probes strong signal and lack of background compared to leading competitor's results.

Ordering Information

AMPIVIEW™ RNA Probes Sets	
Product Name	Product #
AMPIVIEW™ EGFR (AS) Dig RNA Probes Set	ENZ-GEN129
AMPIVIEW™ SARS-CoV-2 RNA Probes Set	ENZ-GEN159
AMPIVIEW™ HPV 6/11 RNA Probes Set	ENZ-GEN145
AMPIVIEW™ HPV 16/18 RNA Probes Set	ENZ-GEN146
AMPIVIEW™ HPV 31/33/51 RNA Probes Set	ENZ-GEN147
AMPIVIEW™ HPV High-Risk RNA Probes Set	ENZ-GEN148

AMPIVIEW™ RNA Probes sets come with targeted probes and AMPIVIEW™ Hybridization Buffer.

Detection Kits	
Product Name	Product #
AMPIVIEW™ POLYVIEW® PLUS (Anti-Mouse) HRP/DAB Detection Kit	ENZ-ACC159
AMPIVIEW™ POLYVIEW® PLUS (Anti-Rabbit) AP/Red Detection Kit	ENZ-ACC160

AMPIVIEW™ detection kits is a starter kit with sufficient reagents for 20 tests. Kits contain Antigen Retrieval Reagent, pH 9.0 (10X), proteinase K, DIGX® anti-digoxigenin linkers, POLYVIEW® PLUS detection reagent, HIGHDEF® substrate/chromogen, AMPIVIEW™ Wash Buffer 1 and 2.

Detection Solutions	
Product Name	Product #
Antigen Retrieval Reagent, pH 9.0 (10X)	ENZ-ACC113
Proteinase K	ENZ-33801
DIGX® rabbit anti-digoxigenin linker	ENZ-ABS303
DIGX® mouse anti-digoxigenin linker	ENZ-ABS304
POLYVIEW® PLUS HRP (anti-mouse)	ENZ-ACC104
POLYVIEW® PLUS AP (anti-rabbit)	ENZ-ACC110
HIGHDEF® DAB Substrate/Chromogen	ENZ-ACC105
HIGHDEF® Hematoxylin	ENZ-ACC106

For more product information and Enzo's wide range detection solutions, visit enzolifesciences.com/AMPIVIEW.

For Research Use Only. Not for Use in Diagnostic Procedures.

Simple Protocols and Clear Results

- Detection of unique nucleic acid targets (DNA/RNA) at a single cell level
- Superior sensitivity and specificity
- Optimized with Enzo's cost-effective IHC/ISH detection solutions
- Simple protocols for formalin-fixed, paraffin-embedded (FFPE) tissues and cells
- Mild protocols to preserve tissue morphology
- No need to buy specialized equipment, end-user can use existing ISH set ups
- Flexible products for any workflow (Manual or Automated)

ASK US ABOUT CUSTOM PROBES

Enzo can design probes for practically ANY gene in ANY genome to be used in ANY tissue or cells.



Global Headquarters
ENZO LIFE SCIENCES, INC.
 Phone: 800.942.0430
info-usa@enzolifesciences.com

European Sales Office
ENZO LIFE SCIENCES (ELS) AG
 Phone: +41 61 926 8989
info-eu@enzolifesciences.com

Belgium, The Netherlands & Luxembourg
 Phone: +32 3 466 0420
info-be@enzolifesciences.com

France
 Phone: +33 472 440 655
info-fr@enzolifesciences.com

Germany
 Phone: +49 7621 5500 526
info-de@enzolifesciences.com

UK & Ireland
 Phone (UK customers):
 0845 601 1488
 Phone: +44 1392 825900
info-uk@enzolifesciences.com