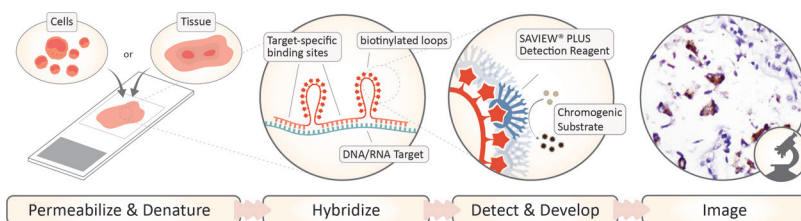


AMPIVIEW™ SARS-CoV-2 RNA Probes

Powered by Enzo's LoopRNA ISH™ technology

AMPIVIEW™ RNA probes are uniquely designed with the precision of targeted, sequence-specific RNA probes, powered by Enzo's LoopRNA ISH™ technology to deliver superior sensitivity. When AMPIVIEW™ RNA probes hybridize to nucleic acid targets, loops form exposing conjugated reporter enzymes such as biotin or digoxigenin, making these probes not only the most sensitive means of detection, but also adaptable with existing immunohistochemistry (IHC) detection solutions and chromogens. Additionally, sample morphology is preserved and the signal of the targeted biomarker can be seen under the light microscope.

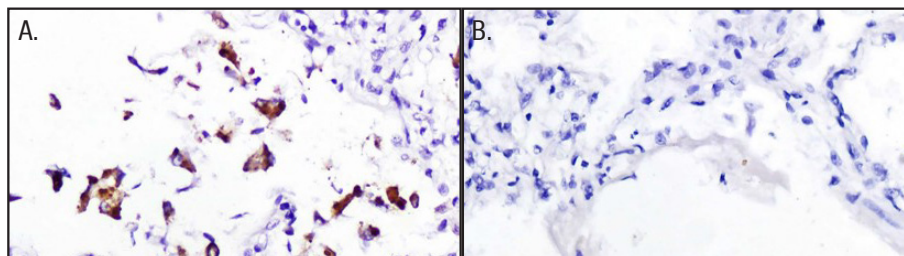


AMPIVIEW™ SARS-CoV-2 RNA probes have been designed to target the N and S protein sequences of SARS-CoV-2 for its detection in tissues and cells. SARS-CoV-2 RNA probes are conjugated with biotin and have been optimized to produce clear results with Enzo's biotin-based detection system, SAVIEW® Plus, Enzo's anti-biotin linker and nanopolymer-based detection systems, POLYVIEW® Plus, and high-quality chromogens, HIGHDEF® to produce clear results that can be visualized with a light microscope.

Simple Protocols and Clear Results

- Detection of unique nucleic acid targets (DNA/RNA) at a single cell level
- High sensitivity and reliability
- Protocols for formalin-fixed, paraffin-embedded (FFPE) tissues and cells
- Mild protocols to preserve tissue morphology
- End-user can use existing ISH set ups and protocols
- Optimized with Enzo's cost-effective IHC/ISH detection portfolio
- Flexible products ready for any workflow (Manual or Automated)

Visualize the Spatial Expression of SARS-CoV-2 in FFPE Tissue Specimens



AMPIVIEW™ SARS-CoV-2 RNA probes are highly specific and sensitive

A. SARS-CoV-2 infection detected with AMPIVIEW™ SARS-CoV-2 RNA probes (brown) in lung tissue specimen from COVID-19 pneumonia patient. B. SARS-CoV-2 infection not detected with AMPIVIEW™ SARS-CoV-2 RNA probes in normal lung tissue specimen [1].



Ordering Information

Product Name	Product #
AMPIVIEW™ SARS-CoV-2 RNA Probes Set	ENZ-GEN159
Contents	
AMPIVIEW™ SARS-CoV-2 RNA probes	ENZ-GEN157
AMPIVIEW™ Hybridization Buffer	ENZ-ACC152

Product Name	Product #
AMPIVIEW™ SARS-CoV-2 RNA Probes Kit	ENZ-GEN158
Contents	
AMPIVIEW™ SARS-CoV-2 RNA probes	ENZ-GEN157
AMPIVIEW™ Hybridization Buffer	ENZ-ACC152
Proteinase K	ENZ-33801
AMPIVIEW™ Wash Buffer 1	ENZ-ACC153
AMPIVIEW™ Wash Buffer 2	ENZ-ACC154
SAVIEW® PLUS AP	ENZ-ACC111
HIGHDEF® Red AP Chromogen/Substrate	ENZ-ACC158
HIGHDEF® Hematoxylin	ENZ-ACC106

Detection Reagents	
Product Name	Product #
SAVIEW® PLUS AP	ENZ-ACC111
SAVIEW® PLUS HRP	ENZ-ACC102

Detection Chromogen/Substrate	
Product Name	Product #
HIGHDEF® Green AP Chromogen/Substrate	ENZ-ACC130
HIGHDEF® Red AP Chromogen/Substrate	ENZ-ACC158
HIGHDEF® DAB HRP Chromogen/Substrate	ENZ-ACC105

For more product information visit enzolifescience.com/AMPIVIEW

ASK US ABOUT CUSTOM PROBES

Enzo can design probes for practically ANY gene in ANY genome to be used in ANY tissue or cells.

Citations

1. Nuovo GJ, Suster D, Tili E, Awad H, Magro C. A Standardization Protocol for the In Situ Detection of SARS-CoV2 RNA and Proteins. Appl Immunohistochem Mol Morphol. 2022 Feb 1;30(2):83-90. doi: 10.1097/PAI.0000000000000992. PMID: 35175238; PMCID: PMC8862676.

Global Headquarters
ENZO LIFE SCIENCES, INC.
 Phone: 800.942.0430
info-usa@enzolifesciences.com

European Sales Office
ENZO LIFE SCIENCES (ELS) AG
 Phone: +41 61 926 8989
info-eu@enzolifesciences.com

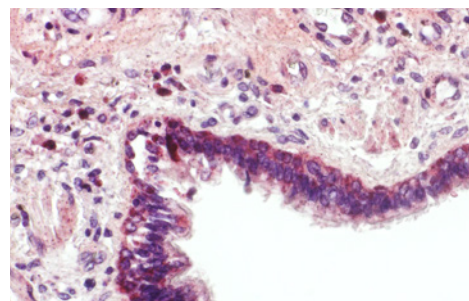
Belgium, The Netherlands & Luxembourg
 Phone: +32 3 466 0420
info-be@enzolifesciences.com

France
 Phone: +33 472 440 655
info-fr@enzolifesciences.com

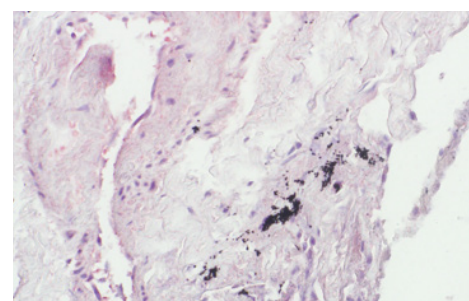
Germany
 Phone: +49 7621 5500 526
info-de@enzolifesciences.com

UK & Ireland
 Phone (UK customers): 0845 601 1488
 Phone: +44 1392 825900
info-uk@enzolifesciences.com

Highly Specific and Sensitive ISH Probes Compatible with Immunohistochemistry Detection Systems



Strong signal (red) is evident in SARS-CoV-2 infected tissue with AMPIVIEW™ SARS-CoV-2 RNA probes combined with Enzo's IHC detection system.



No specific labeling is evident in normal lung tissue incubated with AMPIVIEW™ SARS-CoV-2 RNA probes combined with Enzo's IHC detection system.

For Research Use Only.
 Not for use in Diagnostic Procedures.

