



Technical Bulletin

Affected Product Description: IL-8 (human), ELISA kit

Affected Product Catalog Number: ADI-900-156/ADI-901-156

Replacement Product Catalog Number: ADI-900-156A/ADI-901-156A

Reason: The capture antibody was replaced.

Effective Date: May 1, 2020

As of the effective date above, the IL-8 (human), ELISA kit catalog numbers ADI-900-156 and ADI-901-156 have been replaced with catalog numbers ADI-900-156A and ADI-901-156A, which incorporated a new capture antibody.

The new antibody has undergone rigorous validation and shows no significant loss of efficacy when compared to the previous antibody. During the R&D validation, the kits were run side-by-side to confirm their comparability (**Figure 1**). A comparison of the previous and replacement kit specifications is presented in **Table 1**.

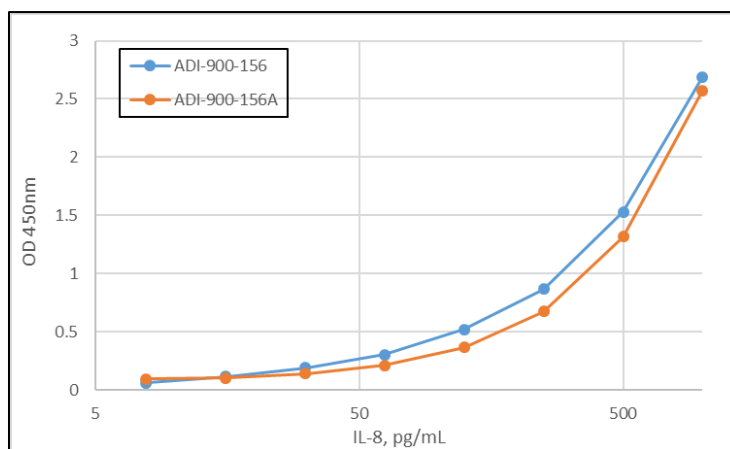


Figure 1. A side-by-side comparison of the IL-8 ELISA kits ADI-900-156 and the replacement kit ADI-900-156A.

Table 1. Assay Specification Comparison

	ADI-900-156/ADI-901-156	ADI-900-156A/ADI-901-156A
Standard Range	7.8-1000 pg/mL	7.8-1000 pg/mL
Sensitivity	0.64pg/mL	0.72pg/mL
Sample Types	Serum, Plasma, Tissue Culture Media	Serum, Plasma, Tissue Culture Media
Time-to-Answer	<3 hours	<3 hours

Global Headquarters
ENZO LIFE SCIENCES, INC.
 Ph: 800.942.0430
 info-usa@enzolifesciences.com

European Sales Office
ENZO LIFE SCIENCES (ELS) AG
 Ph: +41 61 926 8989
 info-eu@enzolifesciences.com

Belgium, The Netherlands
& Luxembourg
 Ph: +32 3 466 0420
 info-be@enzolifesciences.com

France
 Ph: +33 472 440 655
 info-fr@enzolifesciences.com

Germany
 Ph: +49 7621 5500 526
 info-de@enzolifesciences.com

UK & Ireland
 Ph: 0845 601 1488 (UK customers)
 Ph: +44 1392 825900
 info-uk@enzolifesciences.com

For local distributors and detailed product information visit us online: www.enzolifesciences.com

For Research Only. Not for Use in Diagnostic Procedures.