



BIOLIKE™ Infliximab Conformational ELISA Kit

Catalog #: ENZ-KIT124

Complete kit for the systematic 3-D conformational comparability analysis of a biosimilar molecule to Infliximab.



Product Manual

USE FOR RESEARCH PURPOSES ONLY

Unless otherwise specified expressly on the packaging, all products sold hereunder are intended for and may be used for research purposes only and may not be used for food, drug, cosmetic or household use or for the diagnosis or treatment of human beings. Purchase does not include any right or license to use, develop or otherwise exploit these products commercially. Any commercial use, development or exploitation of these products or development using these products without the express written authorization of Enzo Life Sciences, Inc. is strictly prohibited. Buyer assumes all risk and liability for the use and/or results obtained by the use of the products covered by this invoice whether used singularly or in combination with other products.

LIMITED WARRANTY; DISCLAIMER OF WARRANTIES

These products are offered under a limited warranty. The products are guaranteed to meet all appropriate specifications described in the package insert at the time of shipment. Enzo Life Sciences' sole obligation is to replace the product to the extent of the purchasing price. All claims must be made to Enzo Life Sciences, Inc., within five (5) days of receipt of order. THIS WARRANTY IS EXPRESSLY IN LIEU OF ANY OTHER WARRANTIES OR LIABILITIES, EXPRESS OR IMPLIED, INCLUDING WARRANTIES OF MERCHANTABILITY, FITNESS FOR A PARTICULAR PURPOSE, AND NON-INFRINGEMENT OF THE PATENT OR OTHER INTELLECTUAL PROPERTY RIGHTS OF OTHERS, AND ALL SUCH WARRANTIES (AND ANY OTHER WARRANTIES IMPLIED BY LAW) ARE EXPRESSLY DISCLAIMED.

TRADEMARKS AND PATENTS

Several Enzo Life Sciences products and product applications are covered by US and foreign patents and patents pending. Enzo is a trademark of Enzo Life Sciences, Inc.

**FOR RESEARCH USE ONLY.
NOT FOR USE IN DIAGNOSTIC PROCEDURES.**



Please read entire booklet before proceeding with the assay.



Carefully note the handling and storage conditions of each kit component.



Please contact Enzo Life Sciences Technical Support if necessary.

TABLE OF CONTENTS

Background Information.....	2
Assay Principle	2
Materials Supplied	4
Other Materials Needed.....	5
Precautions	5
Procedural Notes	6
Assay Procedure.....	8
Plate 1 Layout.....	10
Plate 2 Layout.....	11
Plate 3 Layout.....	12
Contact Information.....	14

BACKGROUND INFORMATION

Infliximab is a chimeric monoclonal antibody against tumor necrosis factor-alpha (TNF- α). TNF- α is a cytokine, or chemical messenger, and a key part of the autoimmune reaction. Infliximab was first approved by the FDA in 1998 for the treatment of Crohn's disease. It has subsequently been approved for use in treating psoriasis, ankylosing spondylitis, psoriatic arthritis, rheumatoid arthritis, and ulcerative colitis. This kit will allow for conformational (Higher-Order Structure) comparison between biosimilars and authentic Infliximab.

ASSAY PRINCIPLE

The assay is in a sandwich ELISA format where the plate is coated with a panel of antibodies raised against peptides derived from the full length protein sequence of Infliximab. Taken individually, each of these antibodies is strongly antigenic to the peptide sequence that was used in its production. However, when these peptides are incorporated into a full length correctly folded protein, the antigenicity of many of them is masked by the three dimensional structure of the protein and only a limited number of the antibodies respond. The result is a histogram which can be likened to a 'fingerprint' for correctly folded Infliximab. For a Biosimilar, if the protein is correctly folded and glycosylated, the 'fingerprint' will match that of Infliximab. If it is not correctly folded, previously masked peptide sequences will be exposed and will be recognized by the antibody made to that exposed sequence. In this way, changes in the 'fingerprint' generated by the ELISA will point out differences between the Biosimilar and authentic Infliximab.

The assay is performed by making a 5 μ g/ml solution of Biosimilar and Infliximab reference material respectively, and adding to the 96-well plate. Following a 1 hour incubation to allow capture of the Biosimilar and Infliximab reference proteins by the panel of antibodies on the plate, a reporting polyclonal anti-human IgG antibody, conjugated with biotin, is added and incubated for 1 hour to allow it to bind to any captured proteins. After this incubation, the plate is washed and a Streptavidin-HRP (Horse Radish Peroxidase) conjugate is added and incubated for 45 minutes. The Streptavidin-HRP conjugate will be captured by any biotin labeled antibody bound to the plate. Following a wash step to remove unbound conjugate, TMB substrate is added and is converted by the captured HRP to a colored product in proportion to the amount of HRP bound to the plate. After a short incubation to allow color development, the reaction is stopped and the intensity of the generated color is detected in a microtiter plate reader capable of

measuring 450nm wavelength. The color development will be proportional to the captured Biosimilar or Infliximab reference protein. A typical ELISA with only the Infliximab reference protein is shown in **figures 1 and 2** below.

Figure 1. Infliximab Conformational Array ELISA from Variable Region

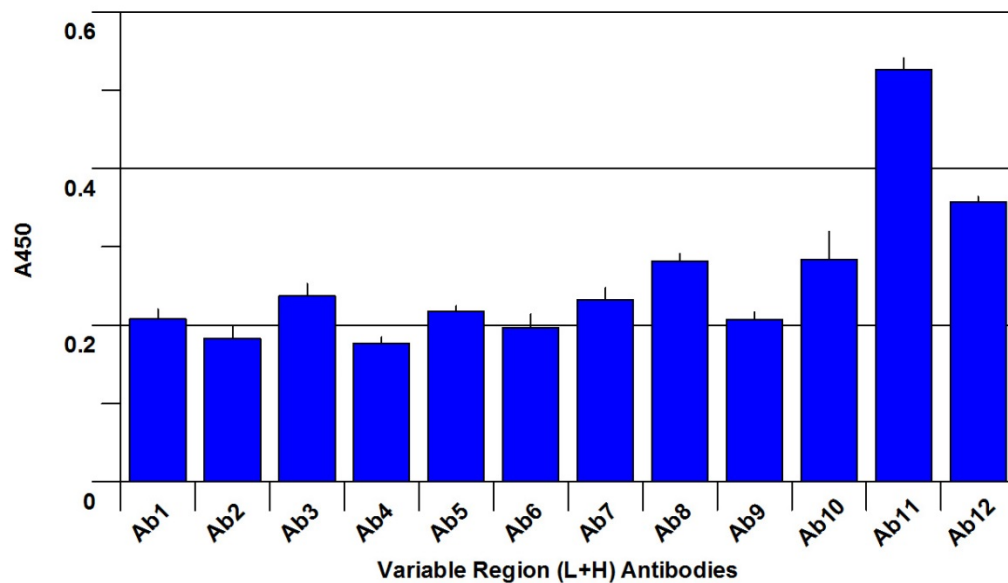
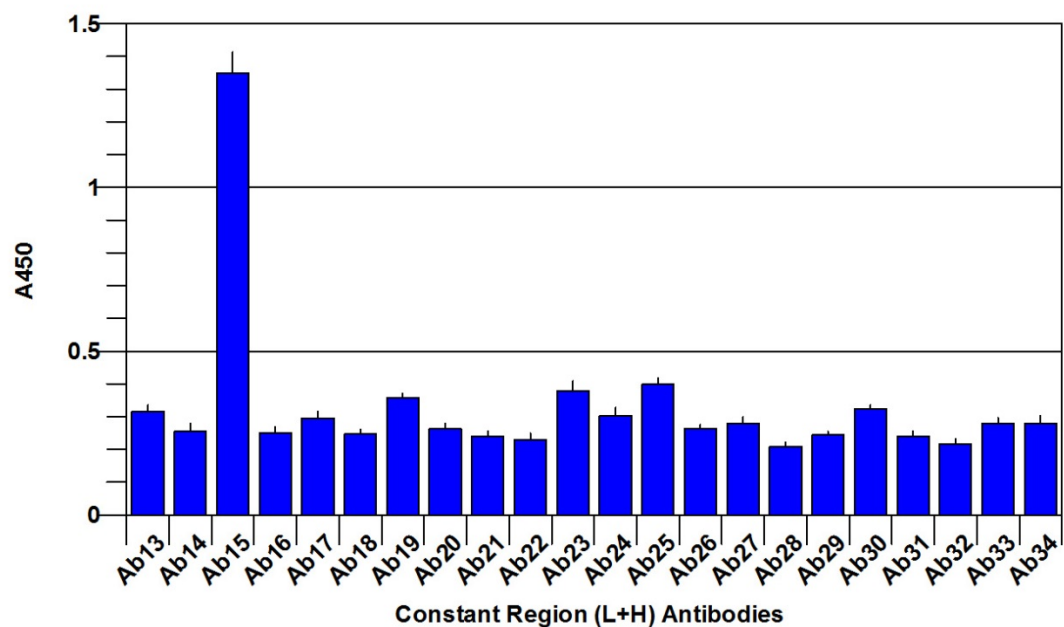


Figure 2. Infliximab Conformational Array ELISA from Constant Region



MATERIALS SUPPLIED

Coated Clear 96 Well Plates

3 clear plastic microtiter plates coated with the panel of antibodies against Infliximab peptides. Plate 1 covers the antibody variable region, plates 2 and 3 cover the antibody constant region.

(3 plates)

5x Dilution Buffer

Buffer used for dilution of antibodies and Streptavidin-HRP conjugate. The 20ml of concentrate should be diluted to 100ml with 80ml deionized or distilled water.

(20ml)

10x PBS-T

After dilution, it is used as wash solution. The 50ml of concentrate should be diluted to 500ml with 450ml deionized or distilled water.

(50ml)

Reporting antibody

A biotin labeled rabbit polyclonal antibody against human IgGs. Immediately prior to the assay, dilute the entire 150 μ l into 30ml of 1x Dilution buffer to give a 5 μ g/ml working stock.

(1mg/ml, 150 μ l / tube)

Streptavidin-HRP Conjugate

A Streptavidin – Horse Radish Peroxidase conjugate in a special stabilizing solution. Immediately prior to the assay, dilute 750 μ l into 30ml of 1x Dilution buffer to give a 0.1 μ g/ml working stock.

(4 μ g/ml, 800 μ l / tube)

TMB Substrate

Use directly without dilution.

(30ml)

Stop Solution

A 1M solution of sulfuric acid. CAUSTIC. Use directly without dilution.

(30ml)

Plate Sealer

(three)

OTHER MATERIALS NEEDED

1. Distilled or deionized water.
2. Single- and multi-channel micro-pipettes with disposable tips to accurately dispense volumes 5-250 μ l.
3. Plastic tubes (i.e. 1.5ml – 15ml) for sample dilution
4. Reagent reservoirs for sample addition
5. Colorimetric 96 well microplate reader capable of reading optical density at 450nm.

PRECAUTIONS

As with all such products, this kit should only be used by qualified personnel who have had laboratory safety instruction. The complete insert should be read and understood before attempting to use the product.

This kit utilizes a peroxidase-based readout system. Buffers, including other manufacturers Wash Buffers, containing sodium azide will inhibit color production from the enzyme. Make sure all buffers used for samples are **azide free**. Ensure that any plate washing system is rinsed well with deionized water prior to using the supplied Wash Buffer as prepared on Page 4.

The Stop Solution is acid. The solution should not come in contact with skin or eyes. Take appropriate precautions when handling this reagent.

PROCEDURAL NOTES

Allow diluted reagents and buffers to reach room temperature (18-25°C) prior to starting the assay. Once the assay has been started, all steps should be completed in sequence and without interruption. You do not want the plate to dry out in between steps as this can cause high backgrounds or erroneous results. Make sure that required reagents and buffers are ready when needed. Prior to adding to the plate, reagents should be mixed gently (not vortexed) by swirling.

Avoid contamination of reagents, pipette tips and wells. Use new disposable tips and reservoirs, do not return unused reagent to the stock bottles/vials and do not mix caps of stock solutions.

Incubation time can affect results. All wells should be handled in the same order for each step.

Microplate washing is important and can affect results by giving erroneous results or high backgrounds. We recommend a multichannel pipette to add 250µl of buffer to each well across the plate, followed by a dumping out of contents (to a sink or other receptacle) with a rapid wrist motion. The plate should then be tapped firmly on a paper towel to shake out any remaining liquid. Avoid prolonged incubation with wash buffer when performing wash steps.

When making additions to the plate, be careful to avoid damaging the antibody coating, for example by scratching the bottoms or the sides of the wells. One technique to avoid this is to make additions (for a right-handed person) from left to right across the plate, supporting the pipette tips on the right edge of the well with each addition and thus avoiding contact with the bottom or sides of the wells.

During the incubation times, the plate should be covered to minimize evaporation from the wells. This can be done with the adhesive covers provided or by stacking an empty plate on top.

After the last wash step and prior to adding the TMB substrate, wipe the bottom of the plate with a clean paper towel to ensure that moisture or fingerprints do not interfere with the OD reading.



Product Manual

Once the TMB substrate is added it will be converted by the captured HRP to a blue colored product. Generally we find that a 10 to 15 minute incubation is sufficient for enough color development to discern differences between the standards and the reaction should be stopped at this point. Bear in mind that, given sufficient time, even a small amount HRP is capable of converting all the TMB to product. Keeping OD₄₅₀ values well below 2.0 will result in greatest accuracy as at high absorbance values very little light is reaching the detector and measurements are error prone. (Remember that at an OD of 1.0 only 10% of the light is being detected and at an OD of 2.0 only 1% of the light is reaching the detector).

ASSAY PROTOCOL

1. Use the plate layout sheets on pages 10-12 to plan sample layout on plate and also aid in proper sample and antibody identification after the assay. Each plate is laid out as shown on the plate maps, with each unique antibody appearing in 6 positions on the plate. Rows A and H are not used in order to minimize edge effects. We recommend that assays are carried out in duplicate or (preferably) triplicate in order to minimize spurious results. For example, we have shown the plate layout for an experiment in triplicate, where the wells used for the control compound are highlighted and the three rows underneath are used for the test compound. For an experiment in duplicate, use rows B-C for the control and rows D-E and F-G for two test compounds.
2. Dilute the 10xPBS-T and 5x Dilution buffer with water to 1x-strength. Check both concentrate bottles for precipitates before proceeding and if found warm slightly in a water bath to dissolve before proceeding. The 50ml of 10xPBS-T should be diluted to 500ml with 450ml water and the 20ml of 5x Dilution Buffer should be diluted to 100ml with 80ml water.
3. Dilute your sample and Infliximab standard to a concentration of 5 μ g/ml; prepare at least 10ml of each if samples are to be run in duplicate, 15ml of each if run in triplicate. Pipette 100 μ l of 5 μ g/ml sample or Infliximab standard into each row of the plate. For replicates use multiple rows, i.e. Infliximab standard in rows 2-3, sample 1 in rows 4-5 and sample 2 in rows 6-7. Cover plates and incubate 1 hour at room temperature.
4. During the above incubation, dilute the 1mg/ml reporting antibody to 5 μ g/ml by adding the entire 150 μ l to 30ml of Dilution Buffer.
5. Wash plate by emptying contents and adding 250 μ l of wash buffer to each well. Empty wells again and tap the plate firmly upside down on a paper towel to fully empty well. Repeat.
6. Pipette 100 μ l of 5 μ g/ml Reporting Antibody into each well. Cover plate and incubate plate 1 hour at room temperature.
7. During the above incubation, dilute the 4 μ g/ml Streptavidin-HRP conjugate to 0.1 μ g/ml by adding the entire 750 μ l to 30ml of Dilution Buffer.

8. Wash plate by emptying contents and adding 250µl of wash buffer to each well. Empty wells again and tap the plate firmly upside down on a paper towel to fully empty well. Repeat.
9. Pipette 100µl of 0.1µg/ml Streptavidin-HRP conjugate into wells. Cover plate and incubate plate 45 min hour at room temperature.
10. Wash plate by emptying contents and adding 250µl of wash buffer to each well. Empty wells again and tap the plate firmly upside down on a paper towel to fully empty well. Repeat 2 more times
11. Add 100µl of TMB substrate to each well. Allow color development to proceed for exactly 15 minutes and then stop reaction by adding 100µl of Stop Solution to each well. Upon addition of stop solution, developed color will change from blue to yellow.
12. Read the optical density generated from each well in a plate reader capable of reading at 450nm, Use wells H10-H12 as blank.
13. Export the plate reader data into Excel and calculate an average and variance for each set of replicates. If the variance is large inspect the raw data to determine the problem. With data in triplicate, one outlier may be evident, but if data is in duplicate, the higher value is generally suspect (it's easier to get a high value in error than a low value). Graph the data as a bar graph so that for each array antibody the response can be compared between your sample and Infliximab standard. Any differences between your sample and the Infliximab standard should be apparent.

Plate 1 Template (variable region)

Control compound suggested use in wells **marked**

	1	2	3	4	5	6	7	8	9	10	11	12
A												
B	Ab1	Ab2	Ab3	Ab4	Ab5	Ab6	Ab7	Ab8	Ab9	Ab10	Ab11	Ab12
C	Ab1	Ab2	Ab3	Ab4	Ab5	Ab6	Ab7	Ab8	Ab9	Ab10	Ab11	Ab12
D	Ab1	Ab2	Ab3	Ab4	Ab5	Ab6	Ab7	Ab8	Ab9	Ab10	Ab11	Ab12
E	Ab1	Ab2	Ab3	Ab4	Ab5	Ab6	Ab7	Ab8	Ab9	Ab10	Ab11	Ab12
F	Ab1	Ab2	Ab3	Ab4	Ab5	Ab6	Ab7	Ab8	Ab9	Ab10	Ab11	Ab12
G	Ab1	Ab2	Ab3	Ab4	Ab5	Ab6	Ab7	Ab8	Ab9	Ab10	Ab11	Ab12
H												

Plate 2 Template (constant region-1)

Control compound suggested use in wells **marked**

	1																						
A																							
B	Ab13	Ab14	Ab15	Ab16	Ab17	Ab18	Ab19	Ab20	Ab21	Ab22	Ab23	Ab24											
C	Ab13	Ab14	Ab15	Ab16	Ab17	Ab18	Ab19	Ab20	Ab21	Ab22	Ab23	Ab24											
D	Ab13	Ab14	Ab15	Ab16	Ab17	Ab18	Ab19	Ab20	Ab21	Ab22	Ab23	Ab24											
E	Ab13	Ab14	Ab15	Ab16	Ab17	Ab18	Ab19	Ab20	Ab21	Ab22	Ab23	Ab24											
F	Ab13	Ab14	Ab15	Ab16	Ab17	Ab18	Ab19	Ab20	Ab21	Ab22	Ab23	Ab24											
G	Ab13	Ab14	Ab15	Ab16	Ab17	Ab18	Ab19	Ab20	Ab21	Ab22	Ab23	Ab24											
H																							

Plate 3 Template (constant region-2)

Control compound suggested use in wells **marked**

	1	2	3	4	5	6	7	8	9	10	11	12
A												
B	Ab25	Ab26	Ab27	Ab28	Ab29	Ab30	Ab31	Ab32	Ab33	Ab34		
C	Ab25	Ab26	Ab27	Ab28	Ab29	Ab30	Ab31	Ab32	Ab33	Ab34		
D	Ab25	Ab26	Ab27	Ab28	Ab29	Ab30	Ab31	Ab32	Ab33	Ab34		
E	Ab25	Ab26	Ab27	Ab28	Ab29	Ab30	Ab31	Ab32	Ab33	Ab34		
F	Ab25	Ab26	Ab27	Ab28	Ab29	Ab30	Ab31	Ab32	Ab33	Ab34		
G	Ab25	Ab26	Ab27	Ab28	Ab29	Ab30	Ab31	Ab32	Ab33	Ab34		
H												



Product Manual

NOTES



Product Manual

GLOBAL HEADQUARTERS

Enzo Life Sciences Inc.
10 Executive Boulevard
Farmingdale, NY 11735
Toll-Free: 1.800.942.0430
Phone: 631.694.7070
Fax: 631.694.7501
info-usa@enzolifesciences.com

EUROPE/ASIA

Enzo Life Sciences (ELS) AG
Industriestrasse 17
CH-4415 Lausen
Switzerland
Phone: +41/0 61 926 89 89
Fax: +41/0 61 926 89 79
info-ch@enzolifesciences.com

For local distributors and detailed product information visit us online:
www.enzolifesciences.com