

# PRODUCT DATA SHEET



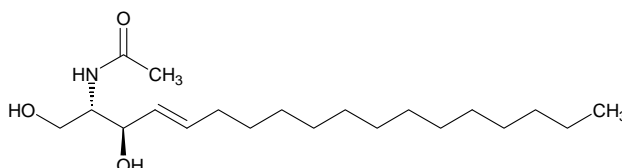
PRODUCT: C<sub>2</sub>-Ceramide (N-Acetylsphingosine)

CAS.NO: 3102-57-6

CATALOG NO.: SL-100

LOT#: temp

STRUCTURE:



PHYSICAL APPEARANCE: white solid (mp=77-78°C)

MOLECULAR FORMULA: C<sub>20</sub>H<sub>39</sub>NO<sub>3</sub>

MOLECULAR WEIGHT: 341.5

PURITY: 98% (TLC)

SOLUBILITY: Soluble in ethanol(>25 mg/ml) and DMSO (>50 mg/ml)\*

STORAGE: Store, as supplied, at -20°C for up to 1 year. Store solutions at -20°C for up to 3 months.

APPLICATION NOTES: Cell-permeable ceramide analog.

\*C<sub>2</sub> ceramide may precipitate from aqueous media, particularly those lacking serum or serum albumin, at concentrations ca. 20 μM or higher. To avoid this problem, a 1:1 complex of C<sub>2</sub> Ceramide with BSA may be prepared as follows:

Dissolve C<sub>2</sub> ceramide to 200 mM (68.3 mg/ml) in anhydrous DMSO (Aldrich, cat. no. 27,685-5). Dissolve fatty acid-free BSA in water to 66 mg/ml (1 mM). Dilute the ceramide/DMSO stock 200-fold into the BSA solution, with constant stirring. A precipitate will form at first, but will dissolve after ~30 min. of stirring at room temperature. Alternatively, a solution of C<sub>2</sub> Ceramide/BSA may be prepared directly, without making a DMSO stock: 1) prepare a 20% w/v stock of BSA in water (3 mM); 2) use the BSA stock to dissolve the solid C<sub>2</sub> Ceramide at 1.02 mg/ml (3 mM). Complete dissolution of the ceramide may require >1 hr. of stirring at room temp.

**The pharmacological and toxicological properties of this product have not been fully investigated. Exercise caution in use and handling. This product must not be used in humans.**

FOR RESEARCH USE ONLY. NOT FOR DIAGNOSTIC OR THERAPEUTIC USE.