

PRODUCT DATA SHEET



CATALOG NO.: SA-640

LOT NO.: temp

PRODUCT: Anti-Melanocortin Receptor 3 (extracellular) and Control Peptide.
KI-493 Anti-Melanocortin Receptor 3 (MC3R)
KI-494 Melanocortin Receptor 3 Control Peptide, 40 µg

IMMUNOGEN: A peptide NSDSLTLLEDQFIQHMD corresponding to amino acid residues 102-117 of Rat MC3R (Accession P32244). This antigen shares 13/16 residues with human and mouse MC3R.

SPECIFICITY: Recognizes MC3R from human, mouse and rat tissue.

APPLICATIONS: WB: 1:200, IH 1:50, FACS 1:40-80.

FORM / PURIFICATION: Rabbit polyclonal antibody: Affinity purified IgG. Supplied lyophilized from PBS, pH 7.4, 1% BSA and 0.025% sodium azide. After reconstitution antibody concentration is **0.8 mg/ml**. Control peptide: Supplied lyophilized.

RECONSTITUTION: To lyophilized antibody, add 50 µl or 200 µl (depending on which size was purchased) of deionized water. To lyophilized peptide, add 100 µl of deionized water.

PREADSORPTION CONTROL: 1 µg peptide per 1 µg antibody. Prepare 2 tubes. In the first, dilute the necessary amount of antibody in 200-500 µl of PBS, 1% BSA and 0.025% sodium azide. Prepare the second tube identically to the first with the addition of the appropriate amount of peptide. Incubate at room temperature for 1 hr. Centrifuge both tubes at 10,000Xg for 5 min. Use the supernatants from tubes 1 and 2 for parallel experiments.

STORAGE: Lyophilized antibody and lyophilized peptide can be stored intact at room temperature for several weeks. For longer periods they should be stored at -20°C. After reconstitution, the antibody solution can be stored at 4°C for up to 2 weeks. For longer periods, small aliquots should be stored at -20°C or below. Avoid freeze/thaw cycles. Further dilutions should be made using a carrier protein such as 1% BSA. Centrifuge all antibody preparations before use (10,000 X g for 5 minutes). After reconstitution, control peptide should be stored at -20°C.

REFERENCES:

1. Z.A. Abdel-Malek. *Cell. Mol. Life Sci.* 2001 **58** 434
2. I Gantz and T.M. Fong. *Am. J. Physiol. Endocrinol. Metab.* 2003 **284** E468
3. J.E.S. Wikberg *et al. Pharm. Res.* 2000 **42** 393
4. D. Hyszar *et al. Cell* 1997 **88** 131
5. R.A.H. Adan *et al. Br. J. Pharmacol.* 2006 **149** 815

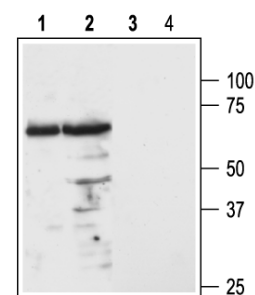


Figure: Western blot analysis of mouse (lanes 1, 3) and rat (lanes 2, 4) brain lysates: Lane 1, 2: Anti-MC3R (extracellular). Lanes 3, 4: Anti-MC3R (extracellular) preincubated with the control peptide

FOR RESEARCH USE ONLY. NOT FOR DIAGNOSTIC OR THERAPEUTIC USE.