

# PRODUCT DATA SHEET



CATALOG NO.: SA-632

LOT NO.: temp

**PRODUCT:** Anti-B1 Bradykinin Receptor and Control Peptide.

KI-477 Anti-B1 Bradykinin Receptor (BKRB1)

KI-478 B1 Bradykinin Receptor Control Peptide, 40 µg

**IMMUNOGEN:** A Peptide KEASRTR\*SGGPKGSK corresponding to amino acid residues 243-257 of rat BKRB1 with replacement of cysteine 250 with serine (\*S) (Accession P97583). This antigen shares 13 /16 amino acid residues with mouse BKRB1.

**SPECIFICITY:** Recognizes BKRB1 from rat tissue.

**APPLICATIONS:** WB: 1:200-1000

**FORM / PURIFICATION:** Rabbit polyclonal antibody: Affinity purified IgG. Supplied lyophilized from PBS, pH 7.4, 1% BSA and 0.025% sodium azide. After reconstitution antibody concentration is 0.8 mg/ml. Control peptide: Supplied lyophilized.

**RECONSTITUTION:** To lyophilized antibody, add 50 µl or 200 µl (depending on which size was purchased) of deionized water. To lyophilized peptide, add 100 µl of deionized water.

**PREADSORPTION CONTROL:** 1 µg peptide per 1 µg antibody. Prepare 2 tubes. In the first, dilute the necessary amount of antibody in 200-500 µl of PBS, 1% BSA and 0.025% sodium azide. Prepare the second tube identically to the first with the addition of the appropriate amount of peptide. Incubate at room temperature for 1 hr. Centrifuge both tubes at 10,000Xg for 5 min. Use the supernatants from tubes 1 and 2 for parallel experiments.

**STORAGE:** Lyophilized antibody and lyophilized peptide can be stored intact at room temperature for several weeks. For longer periods they should be stored at -20°C. After reconstitution, the antibody solution can be stored at 4°C for up to 2 weeks. For longer periods, small aliquots should be stored at -20°C or below. Avoid freeze/thaw cycles. Further dilutions should be made using a carrier protein such as 1% BSA. Centrifuge all antibody preparations before use (10,000 X g for 5 minutes). After reconstitution, control peptide should be stored at -20°C.

## REFERENCES:

1. K. Walker *et al Neurochem. Int.* 1995 **26** 1
2. S. Böckmann and I. Paegelow *J. Leukoc. Biol.* 2000 **68** 587
3. J. F. Hess *et al. J. Pharmacol. Exp. Ther.* 2004 **310** 488

FOR RESEARCH USE ONLY. NOT FOR DIAGNOSTIC OR THERAPEUTIC USE.

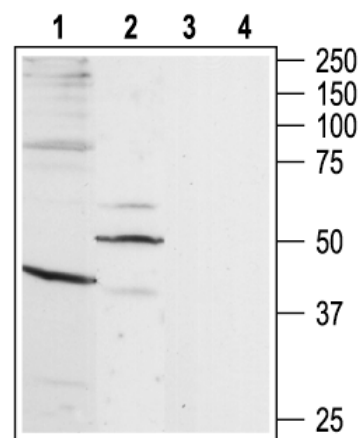


Figure:Western blot analysis of rat brain (1,3) and rat heart (2,4) lysates: Lane 1, 2. Anti-BKRB1. Lanes 3, 4. Anti-BKRB1 preincubated with the control peptide.