

PRODUCT DATA SHEET



CATALOG NO.: SA-586

LOT NO.: temp

PRODUCT: Anti-P2Y6 Receptor (P2RY6) and Control Peptide.

KI-402 Anti-P2Y6 Receptor

KI-403 P2Y6 Receptor Control Peptide, 40 µg

IMMUNOGEN: A synthetic peptide corresponding to amino acid residues 311-328 of rat P2RY6, Accession: Q63371. This sequence shares 17/18 residues with mouse and 15/18 residues with human P2RY6.

SPECIFICITY: Recognizes P2RY6 from rat tissue.

APPLICATIONS: WB: 1:200, IH.

FORM / PURIFICATION: Rabbit polyclonal antibody: Affinity purified IgG. Supplied lyophilized from PBS, pH 7.4, 1% BSA and 0.05% sodium azide. After reconstitution antibody concentration is **0.76 mg/ml**. Control peptide: Supplied lyophilized.

RECONSTITUTION: To lyophilized antibody, add 50 µl or 200 µl (depending on which size was purchased) of deionized water. To lyophilized control peptide, add 100 µl of distilled water.

PREADSORPTION CONTROL: 1 µg control peptide per 1 µg antibody. Prepare 2 tubes. In the first, dilute the necessary amount of antibody in 200-500 µl of PBS, 1% BSA and 0.025% sodium azide. Prepare the second tube identically to the first with the addition of the appropriate amount of peptide. Incubate at room temperature for 1 hr. Centrifuge both tubes at 10,000Xg for 5 min. Use the supernatants from tubes 1 and 2 for parallel experiments.

STORAGE: Lyophilized antibody and lyophilized peptide can be stored intact at room temperature for several weeks. For longer periods they should be stored at -20°C. After reconstitution, the antibody solution can be stored at 4°C for up to 2 weeks. For longer periods, small aliquots should be stored at -20°C or below. Avoid freeze/thaw cycles. Further dilutions should be made using a carrier protein such as 1% BSA. Centrifuge all antibody preparations before use (10,000 X g for 5 minutes). After reconstitution, control peptide should be stored at -20°C.

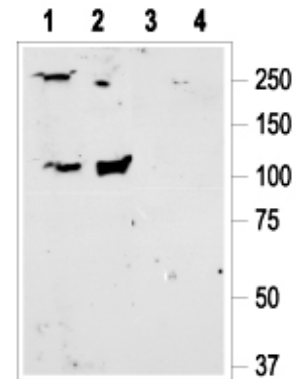


Figure: Lanes 1 & 3: rat brain lysate. Lanes 2 & 4 rat heart lysate. Lanes 1 & 2 were probed with Anti-P2Y6 and Lanes 3 & 4 were probed with Anti-P2Y6 which had been pre-incubated with the control peptide.

FOR RESEARCH USE ONLY. NOT FOR DIAGNOSTIC OR THERAPEUTIC USE.