

PRODUCT DATA SHEET



CATALOG NO.: SA-565

LOT NO.: temp

PRODUCT: Anti-TRPV4 and Control Peptide.

KI-360 Anti-TRPV4

KI-361 TRPV4 Control Peptide, 40 µg

IMMUNOGEN: A peptide corresponding to amino acid residues 853-871 and the C-terminus of rat TRPV4 (VROAC, OTRPC4, TRP12), Accession: Q9ERZ8. This sequence has 17/19 residues identical to mouse TRPV4 and 16/19 to human TRPV4.

SPECIFICITY: Recognizes TRPV4 from mouse and rat tissue.

APPLICATIONS: WB: 1:200, IH.

FORM / PURIFICATION: Rabbit polyclonal antibody: Affinity purified IgG. Supplied lyophilized from PBS, pH 7.4, 1% BSA and 0.05% sodium azide. After reconstitution antibody concentration is 0.8 mg/ml. Control peptide: Supplied lyophilized.

RECONSTITUTION: To lyophilized antibody, add 50 µl or 200 µl (depending on which size was purchased) of deionized water. To lyophilized peptide, add 100 µl of deionized water.

PREADSORPTION CONTROL: 1 µg peptide per 1 µg antibody. Prepare 2 tubes. In the first, dilute the necessary amount of antibody in 200-500 µl of PBS, 1% BSA and 0.05% sodium azide. Prepare the second tube identically to the first with the addition of the appropriate amount of peptide. Incubate at room temperature for 1 hr. Centrifuge both tubes at 10,000Xg for 5 min. Use the supernatants from tubes 1 and 2 for parallel experiments.

STORAGE: Lyophilized antibody and lyophilized peptide can be stored intact at room temperature for several weeks. For longer periods they should be stored at -20°C. After reconstitution, the antibody solution can be stored at 4°C for up to 2 weeks. For longer periods, small aliquots should be stored at -20°C or below. Avoid freeze/thaw cycles. Further dilutions should be made using a carrier protein such as 1% BSA. Centrifuge all antibody preparations before use (10,000 X g for 5 minutes). After reconstitution, control peptide should be stored at -20°C.

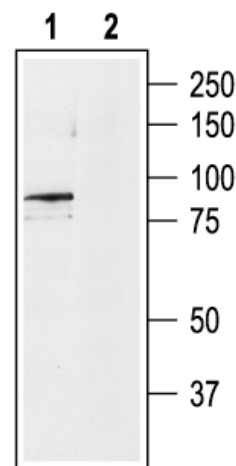


Figure: Lanes 1 & 2: Rat brain lysate.. Lane 1 was probed with Anti-TRPV4. Lane 2 was probed with Anti-TRPV4 which had been pre-incubated with the control peptide.

FOR RESEARCH USE ONLY. NOT FOR DIAGNOSTIC OR THERAPEUTIC USE.