

PRODUCT DATA SHEET



CATALOG NO.: SA-481

LOT NO.: temp

PRODUCT: Anti-14-3-3 tau / theta

IMMUNOGEN: Raised against an N-terminal epitope of 14-3-3 tau / theta which is N-acetylated.

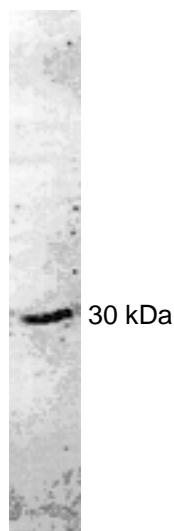
SPECIFICITY: Recognizes the tau/ theta isotype of 14-3-3. This antibody recognizes human, mouse, rat, cow, and sheep 14-3-3 tau/theta. This sequence is identical in all mammals.

APPLICATIONS: WB, 1:3000 for enhanced HRP/ECL detection. IH, 1:60

FORM / PURIFICATION: Rabbit serum containing sodium azide.

STORAGE: -20°C

Figure: Western blot of rat brain cell extracts probed with anti-tau/theta antibody. Anti-tau/theta antibody 1:3000. Developed by HRP/ECL with 10 s exposure.



REFERENCES:

1. H. Martin *et al.* *FEBS Lett.* 1993 **331** 296
2. H. Martin *et al.* *J. Neurochem* 1994 **63** 2259.
3. Y. Patel *et al.* *Biochim Biophys Acta* 1994 **1222** 405
4. A. Aitken *et al.* *J Biol Chem* 1995 **270** 5706
5. C. Wheeler-Jones *et al.* *Biochem J* 1996 **315** 41
6. R. Layfield *et al.* *Neurosci Lett.* 1996 **209** 57
7. M. Yaffe *et al.* *Cell* 1997 **91** 961
8. M. Matto-Yelin *et al.* *Mol Biol Cell* 1997 **8** 1889
9. J. Wiltfang *et al.* *J Neurochem* 1999 **73** 2485
10. H. Baxter *et al.* *Neuroscience* 2002 **2109** 5
11. A. Aitken *et al.* *Plant Mol Biol* 2002 **50** 993
12. H-K. Chen *et al.* *Cell* 2003 **113** 457
13. M. Chaudhri *et al.* *Biochem Biophys Res Commun* 2003 **300** 679
14. P. Steinacker *et al.* *Mol Cell Biol* 2005 **25** 1339
15. S. Mackie and A. Aitken. *FEBS J* 2005 **272** 4202

FOR RESEARCH USE ONLY. NOT FOR DIAGNOSTIC OR THERAPEUTIC USE.