

PRODUCT DATA SHEET



CATALOG NO.: SA-474

LOT NO.: temp

PRODUCT: Anti-14-3-3 beta isoform

IMMUNOGEN: Raised against an N-terminal epitope which is N-acetylated.

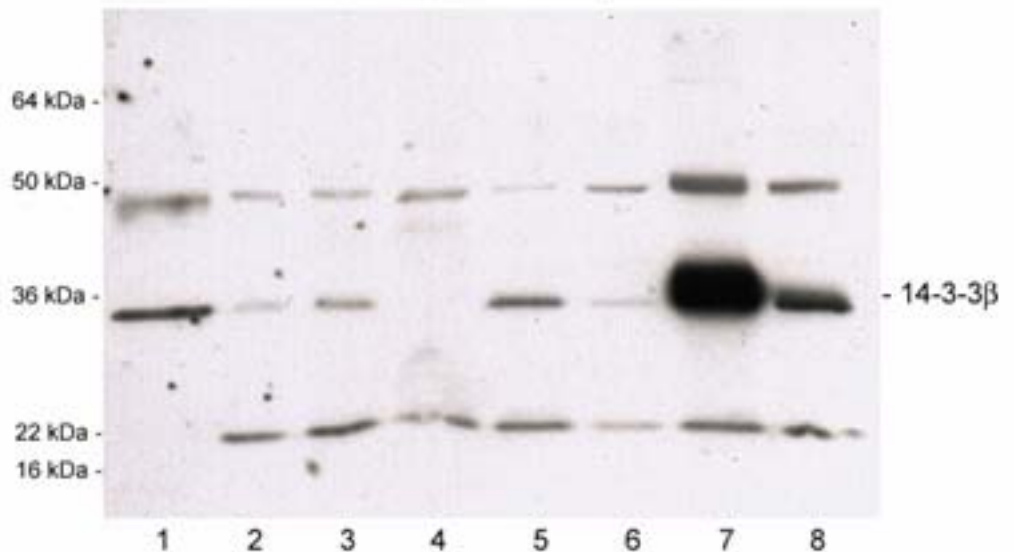
SPECIFICITY: Recognizes the protein encoded by the alternate start site with the first initiator Met codon and is therefore highly specific for the beta isoform. This antibody may not react with *E. coli* recombinant protein that is not N-acetylated. This antibody recognizes human, mouse, rat, rabbit, cow, sheep 14-3-3 beta.

APPLICATIONS: WB, 1:3000 for enhanced HRP/ECL detection. ELISA, IH: 1:600, Affinity Chromatography.

FORM / PURIFICATION: Rabbit polyclonal serum

STORAGE: Serum can be stored frozen at -20°C

Western blot of 14-3-3 beta in 1) HeLa S100 (C), 2) HeLa whole cell, 3) Jurkat, 4) MDCK, 5) A431, 6) MDF-7, 7) rat brain, 8) PC12 cell lysates. Primary antibody was diluted 1:3000. Blot was developed by HRP/ECL.



REFERENCES:

1. H. Martin *et al.* *FEBS Lett.* 1993 **331** 296
2. H. Martin *et al.* *J. Neurochem* 1994 **63** 2259.
3. Y. Patel *et al.* *Biochim Biophys Acta* 1994 **1222** 405
4. A. Aitken *et al.* *J Biol Chem* 1995 **270** 5706
5. C. Wheeler-Jones *et al.* *Biochem J* 1996 **315** 41
6. R. Layfield *et al.* *Neurosci Lett.* 1996 **209** 57
7. M. Yaffe *et al.* *Cell* 1997 **91** 961
8. M. Matto-Yelin *et al.* *Mol Biol Cell* 1997 **8** 1889
9. J. Wiltfang *et al.* *J Neurochem* 1999 **73** 2485
10. H. Baxter *et al.* *Neuroscience* 2002 **2109** 5
11. A. Aitken *et al.* *Plant Mol Biol* 2002 **50** 993
12. H-K. Chen *et al.* *Cell* 2003 **113** 457
13. M. Chaudhri *et al.* *Biochem Biophys Res Commun* 2003 **300** 679
14. P. Steinacker *et al.* *Mol Cell Biol* 2005 **25** 1339
15. S. Mackie and A. Aitken. *FEBS J* 2005 **272** 4202

FOR RESEARCH USE ONLY. NOT FOR DIAGNOSTIC OR THERAPEUTIC USE.