

CATALOG NO.: BML-SA296

LOT NO.: temp

PRODUCT: Anti-Cyclophilin A rabbit polyclonal antibody

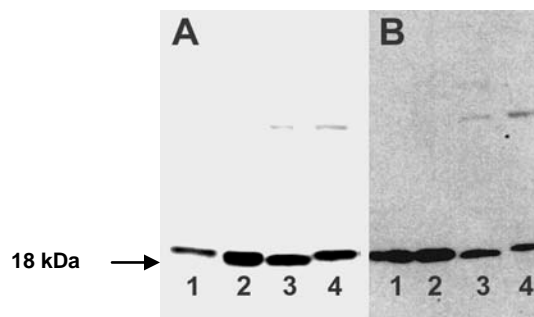
IMMUNOGEN: Recombinant human cyclophilin A conjugated to KLH.

SPECIFICITY: Recognizes human, mouse and rat cyclophilin A.

APPLICATIONS: Western blotting: 1:10,000-50,000 (see figure legend). Will recognize an approximately 18 kDa protein. The optimal antibody concentration should be determined for each specific application.

FORM / PURIFICATION: 100 µl of rabbit serum.

STORAGE: -80°C. Upon initial thawing, aliquot into smaller portions. Avoid freeze/thaw cycles.



Western blot analysis. Lanes 1) 25 ng of recombinant cyclophilin A (Cat. # BML-SE105). 2) 5 µl Jurkat Cell Extract (Cat.# BML-SW115), 3) 5 µl Rat brain extract (Cat.# BML-SW103), 4) 5 µl Mouse brain extract (Cat.# BML-SW104). Membranes were blocked with 5% BSA and 0.1% Tween. **Panel A:** Nitrocellulose was probed with anti-cyclophilin A at 1:10,000. The secondary antibody was coupled to alkaline phosphatase and the blot was developed with BCIP/NBT. **Panel B:** Nitrocellulose was probed with anti-cyclophilin A at 1:50,000. The secondary antibody was coupled to horseradish peroxidase and developed by chemiluminescence with ECL for 10 min.

REFERENCES:

- J. Kunz and M.M. Hall *Trends Biochem. Sci.* 1993 **18** 334
A. Galat *Eur. J. Biochem.* 1993 **216** 689
J. Liu *et al. Cell* 1991 **66** 807
J.L. Kofrom *et al. Biochemistry* 1991 **30** 6127

FOR RESEARCH USE ONLY. NOT FOR DIAGNOSTIC OR THERAPEUTIC USE.