

PRODUCT DATA SHEET



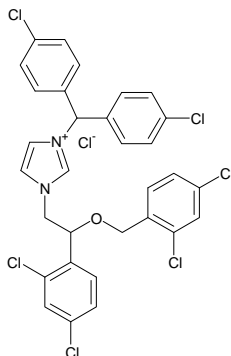
PRODUCT: Calmidazolium chloride
R24571

CAS NO: 57265-65-3

CATALOG NO.: CA-300

LOT NO.: temp

STRUCTURE:



PHYSICAL APPEARANCE: White solid

MOLECULAR FORMULA: $C_{31}H_{23}Cl_6N_2O \cdot Cl$ MOLECULAR WEIGHT: 687.7

PURITY: 98%(TLC)

SOLUBILITY: Soluble in ethanol (>100 mg/mL) and DMSO (>100 mg/mL)

STORAGE: Store, as supplied, at -20°C for up to 2 years. Store solutions at -20°C for up to 3 months.

APPLICATION NOTES: Make stock solutions in DMSO and then dilute in aqueous medium. Binds reversibly to calmodulin, inhibiting calmodulin mediated enzyme activation.¹ Inhibits the Ca^{2+} /calmodulin-induced activation of myosin light chain kinase in a concentration dependent manner ($IC_{50} = 1 \mu M$).² Cell permeable.³ Inhibits calmodulin N-methyltransferase ($K_i = 65 \text{ nM}$).⁴

- REFERENCES:
1. K.Gietzen *et al. Biochem.J.* 1982 **207** 541
 2. M.Asano *J.Pharmacol.Exp.Ther.* 1989 **251** 764
 3. A.Schaefer *et al. J.Biol.Chem.* 1996 **271** 13484
 4. L.S.Wright *et al. J.Biol.Chem.* 1996 **271** 12737

The pharmacological and toxicological properties of this product have not been fully investigated. Exercise caution in use and handling. This product must not be used in humans.